



WESTERN STONE
GLAZED PORCELAIN STONEWARE

No difference between inside and outside between stone and porcelain. A common natural origin brings products to life and to its display. We have chosen wide spaces, facing a natural landscape to show beauty and naturalness of this product. Shaded and colored like a natural stone, strong and technological like the most innovative porcelain tile.

WWS

A natural environment enhances a common look



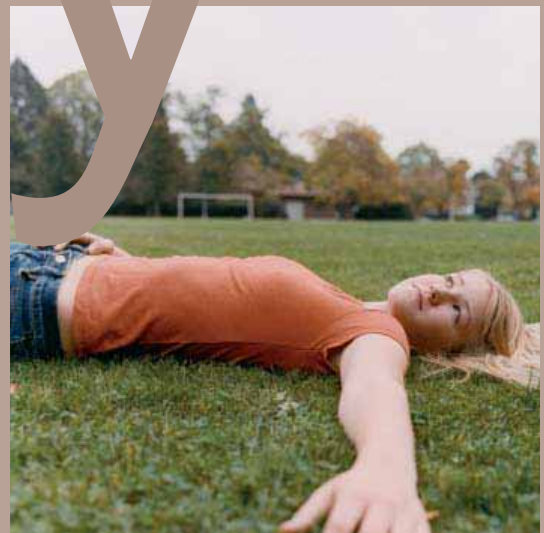




canyon city BG

Western Stone captures the unique features of the real stone through a sophisticated technology, adding high quality characteristics in hardness and resistance to abrasion and all types of wear.

Cy



canyon city BG





gold rush GI







gold rush GI

The expressive potential of porcelain has been increased through the use of different textures and veining that underscore the uniqueness and different look of this product. Western Stone brings a soft and warm atmosphere in all spaces of your home allowing a perfect application that easily matches every architectural or design style.

gr







yukon trail NO

An unusual, charming and intimate look is the background on which you can play with classic or modern furniture. The different sizes of the product can be combined in creative patterns on floors and walls, choosing among four beautiful colors.

y t



yukon trail NO





klondike RS



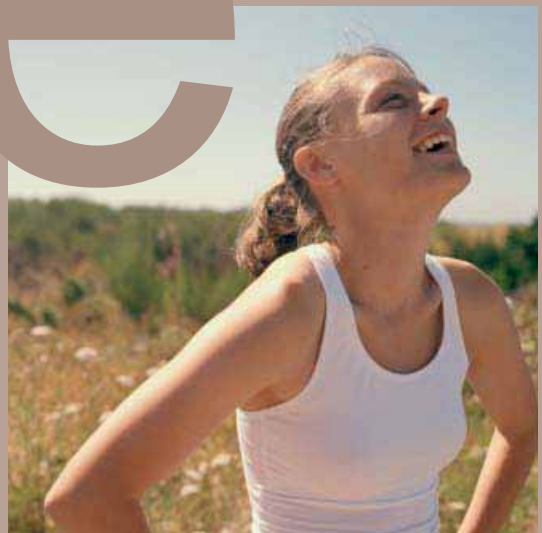




klondike RS

The enjoyment of a warm, bright color as a base component of contemporary architectural projects. Combining different layer patterns of a strong and beautiful surface with forms, structures and furniture results in powerful spaces.

ke



WESTERN STONE
GLAZED PORCELAIN STONEWARE

20" x 20"
13" x 13"
6 1/2" x 6 1/2"



A392 Canyon City BG
20" x 20"
A397 Canyon City BG
13" x 13"
A402 Canyon City BG
6 1/2" x 6 1/2"



A393 Yukon Trail NO
20" x 20"
A398 Yukon Trail NO
13" x 13"
A403 Yukon Trail NO
6 1/2" x 6 1/2"



A394 Gold Rush GI
20" x 20"
A399 Gold Rush GI
13" x 13"
A404 Gold Rush GI
6 1/2" x 6 1/2"



AF2S Klondike RS
20" x 20"
AF2R Klondike RS
13" x 13"
AF2Q Klondike RS
6 1/2" x 6 1/2"



SINGLE BULLNOSE



AE33 Canyon City BG SBN
AE34 Yukon Trail NO SBN
AE35 Gold Rush GI SBN
AF2T Klondike RS SBN
3" x 13"

WESTERN STONE
GLAZED PORCELAIN STONEWARE

20" x 20"
13" x 13"
6 1/2" x 6 1/2"



AE3K Canyon City BG
Mosaic - Square 2" x 2"
13" x 13"



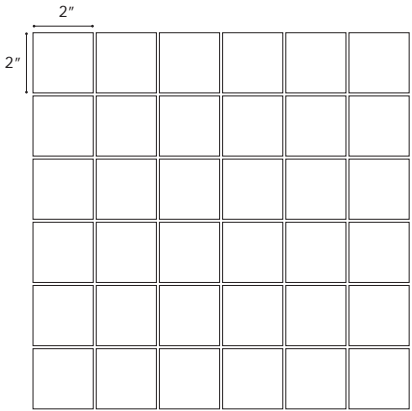
AE3N Yukon Trail NO
Mosaic - Square 2" x 2"
13" x 13"



AE3M Gold Rush GI
Mosaic - Square 2" x 2"
13" x 13"



AF2U Klondike RS
Mosaic - Square 2" x 2"
13" x 13"



Cut, tumbled and mesh mounted mosaics.

TRIMS



AF4C Canyon City BG V-Cap
AF4F Yukon Trail NO V-Cap
AF4D Gold Rush GI V-Cap
AF4E Klondike RS V-Cap
2 1/8" x 6 1/2"



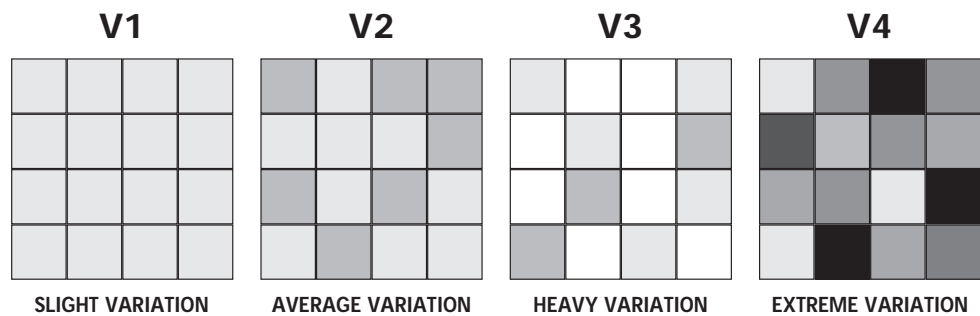
AF4G Canyon City BG V-Cap Corner
AF4K Yukon Trail NO V-Cap Corner
AF4H Gold Rush GI V-Cap Corner
AF4J Klondike RS V-Cap Corner
3/4" x 2 1/4"

Shade variations

The color and shade of all tiles vary to some degree. This variance can be from piece to piece and can also occur from production run to production run.

The Ceramic Tile Distributor Association (CTDA), in cooperation with tile manufacturers and distributors, has put together helpful literature entitled the CTDA Color Shade Variation Guide. This guide rates ceramic tile on a four-point scale and ranges from V1 through V4.

Instituting the CTDA's color shade variation guidelines you will reduce customer complaints and sell the unique and individual beauty of each ceramic tile.



V1 Slight Shade Variation

The range of color and/ or finish within the same shade is relatively uniform from tile to tile.

V2 Average Shade Variation

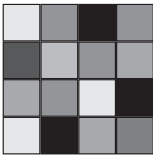
The range of color and/ or finish within the same shade is moderately noticeable from tile to tile.

V3 Heavy Shade Variation

The range of color and/ or finish within the same shade is distinctly different from tile to tile.

V4 Extreme Shade Variation

The range of color and/ or finish within the same shade is extensively random from tile to tile.

SHADE VARIATION AND APPLICATIONS				
V4		Residential	Commercial	Industrial
 <p>EXTREME VARIATION</p>	Floor	•	•	
	Wall	•	•	
	Countertop	•	•	
	Pool	•	•	

Water, oil, grease, or other fluids create slippery conditions. Floors with exposure to these conditions require extra caution in product selection and proper maintenance.

Care & Maintenance

Western Stone is a stain-resistant porcelain tile. Routine maintenance will keep your tile looking new for years to come.

Ragno USA's products are typically easy to install and maintain using the following general guidelines:

- Choose tile from same dye lot and caliber whenever possible
- Select tile alternately from several boxes and rotate when installing
- Follow industry-accepted installation practices as detailed by Tile Council of America "Handbook for Ceramic Tile Installation" or those recommended by the Ceramic Tile Institute of America
- Remove all grout residue promptly after application; neither acid cleaning nor sealing is recommended
- Clean regularly with clear water and/or a neutral (soapless) cleaner, wipe dry to lessen slippery conditions

TECHNICAL SPECIFICATIONS			
DESCRIPTION		RESULT	ASTM#
Water Absorption		≤ 0.50%	C373
PEI Rating		4	C1027
MOHS (Scratch Resistance)		7	MOHS Scale
Frost Resistant		Resistant	C1026
C.O.F. Wet		0.60 ≤ COF < 0.70	C1028
C.O.F. Dry		0.70 ≤ COF < 0.80	C1028
Breaking Strength	6 ^{1/2} " x 6 ^{1/2} "	≥ 540 lbs. (246 kg)	C648
	13" x 13"	≥ 540 lbs. (246 kg)	C648
	20" x 20"	≥ 640 lbs. (291 kg)	C648
Chemical Resistance	ACID	Very good	C650
	BASE	Very good	C650

PACKAGING								
	SIZE	THICKNESS	BOX			PALLET		
			PCS	SQ FT	LBS	BOXES	SQ FT	LBS
Floor Tile	20" x 20"	7/16"	06	16.15	73.00	24	387.60	1752.00
Floor Tile	13" x 13"	6/16"	09	10.74	47.00	56	601.44	2632.00
Floor Tile	6 ^{1/2} " x 6 ^{1/2} "	6/16"	32	9.38	42.00	51	478.38	2142.00
Mosaic - 2" x 2" Square	13" x 13"	Compatible	10		39.00			
V-Cap	2 ^{1/4} " x 6 ^{1/2} "	Compatible	10		3.00			
V-Cap Corner	3/4" x 2 ^{1/4} "	Compatible	04		1.00			
Single Bullnose	3" x 13"	Compatible	30		31.00			



Field Tile



Wall Tile



Durability



C.O.F. (Wet)



C.O.F. (Dry)



Modular Tile



Decorative Tile



Extreme Variation



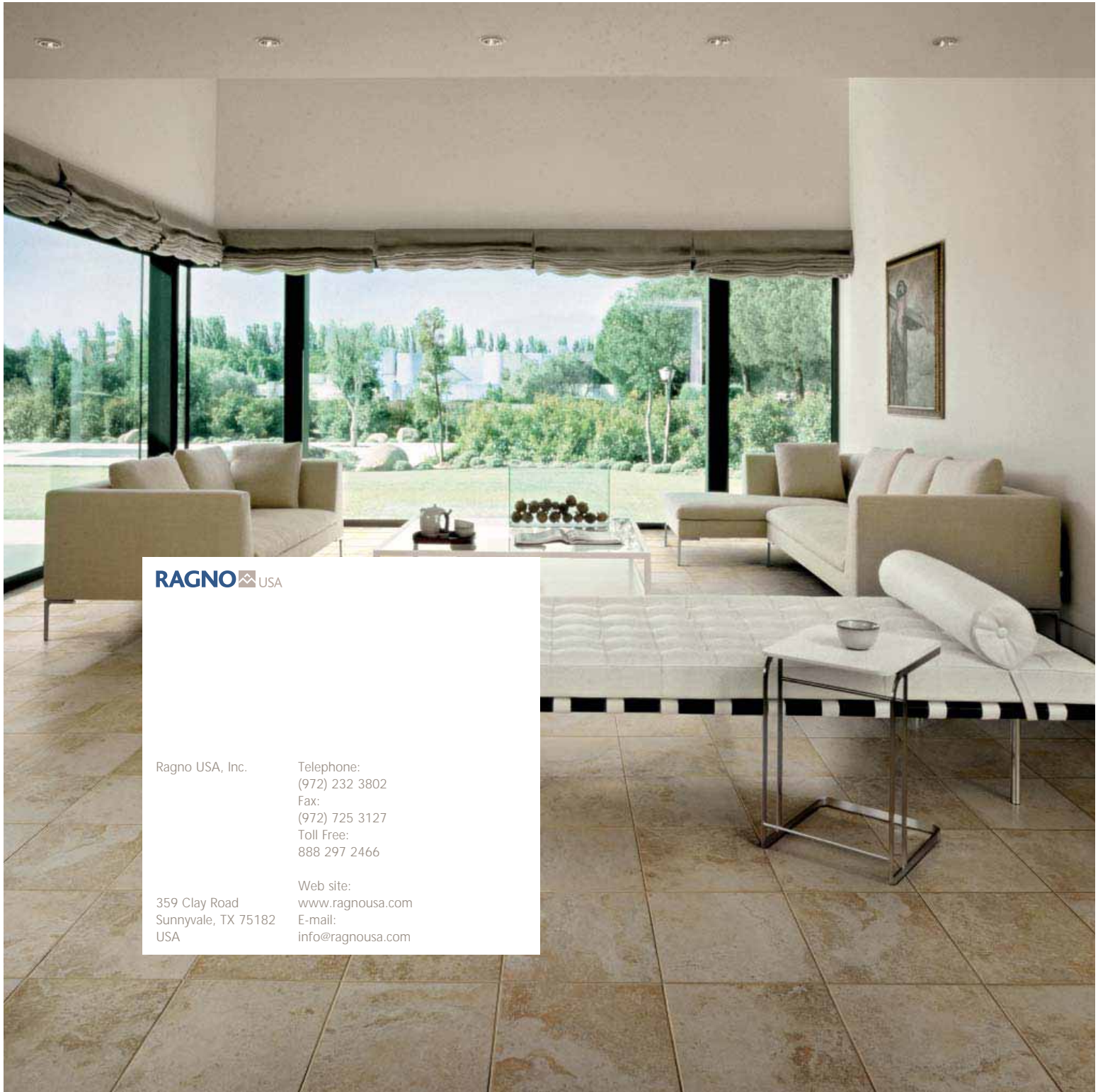
Trim Available



Frost Resistant



Meets ADA Recommendations



RAGNO USA

Ragno USA, Inc.

Telephone:
(972) 232 3802
Fax:
(972) 725 3127
Toll Free:
888 297 2466

359 Clay Road
Sunnyvale, TX 75182
USA

Web site:
www.ragnousa.com
E-mail:
info@ragnousa.com